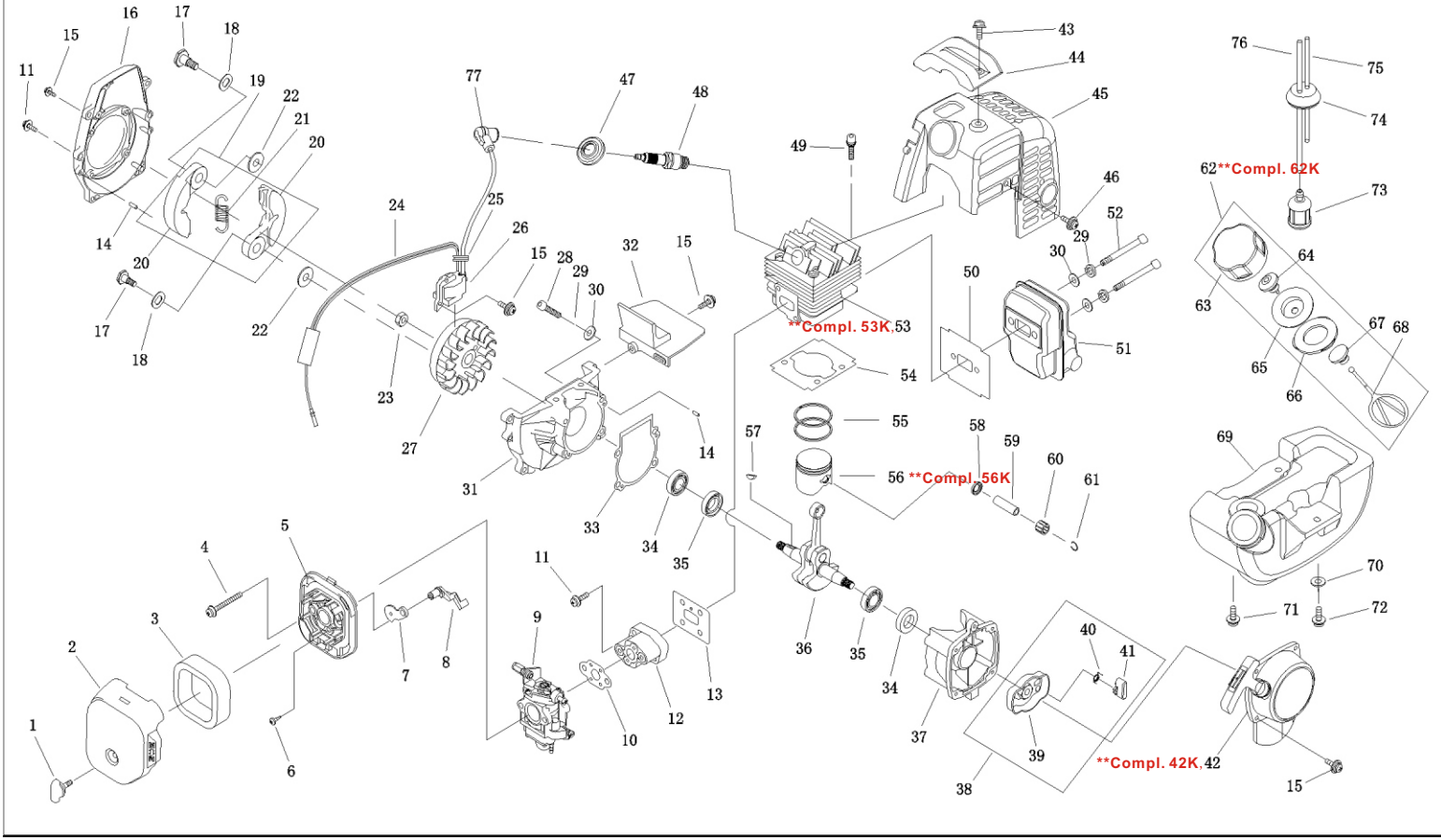
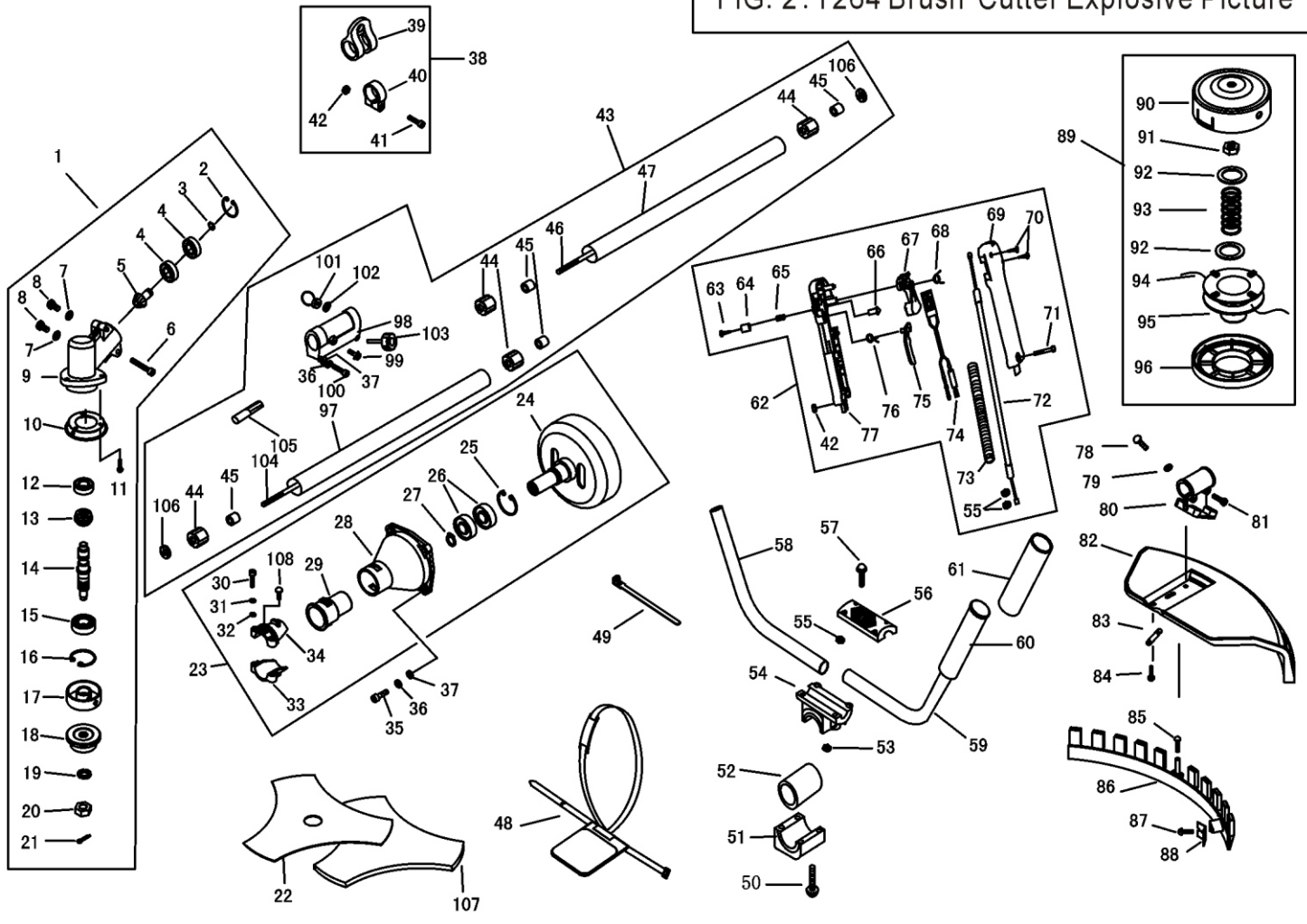


FIG. 1: T264 Gasoline Engine Explosive Picture



Ser.No.	Code	Part Name	Qty	Ser.No.	Code	Part Name	Qty	Ser.No.	Code	Part Name	Qty
1-1	16264101	SCREW	1	1-28	16264128	SCREW M5X25	4	1-53K	16264153K	Cylinder Block Assy (Including Piston Assy)	1
1-2	16264102	CLEANER OUTSIDE COIVER	1	1-29	16264129	WASHER 5	6	1-54	16264154	GASKET,cylinder	1
1-3	16264103	FILTER	1	1-30	16264130	WASHER 5	6	1-55	16264155	RING,piston	2
1-4	16264104	SCREW ASSY M5X55	2	1-31	16264131	FRONT HALF CRANKCASE	1	1-56	16264156	PISTON	1
1-5	16264105	CLEANER OUTSIDE COIVER	1	1-32	16264132	GUIDE PLATE	1	1-56K	16264156K	Piston Assy (Including Ring Set, Pin & circlip)	1
1-6	16264106	SCREW ST4X10	2	1-33	16264133	GASKET,crankcase	1	1-57	16264157	KEY	1
1-7	16264107	CHOKE	1	1-34	16264134	OIL SEAL 12X22X7	2	1-58	16264158	STOP RING	2
1-8	16264108	CHOKE HANDLE	1	1-35	16264135	BALL-BEARING 6001/P5	2	1-59	16264159	PIN,piston	1
1-9	16264109	CARBURETOR	1	1-36	16264136	CRANKSHAFT COMP.	1	1-60	16264160	NEEDLE,bearing	1
1-10	16264110	GASKET,carburetor side	1	1-37	16264137	REAR HALF CRANKCASE	1	1-61	16264161	PISTON PIN CIRCLET	2
1-11	16264111	SCREW ASSY M5X20	6	1-38	16264138	STARTER PULLEY ASSY	1	1-62K	16264162	FUEL TANK CAP ASSY	1
1-12	16264112	INLET MANIFOLD	1	1-39	16264139	STARTER PULLEY	1	1-63	16264163	FUEL TANK CAP	1
1-13	16264113	WASHER,cylinder side	1	1-40	16264140	STARTER PAWL SPRING	1	1-64	16264164	AIR INLET MOUTH	1
1-14	16264114	PIN B3X10	4	1-41	16264141	STARTER PAWL	1	1-65	16264165	FRAME	1
1-15	16264115	SCREW ASSY M4X16	9	1-42	16264142	STARTER	1	1-66	16264166	GASKET,fuel tank cap	1
1-16	16264116	FAN COVER	1	1-42K	16264142K	Recoil Starter ASSY	1	1-67	16264167	防脱链座	1
1-17	16264117	CLUTCH STEP SCREW	2	1-43	16264143	SCREW ASSY M5X14	1	1-68	16264168	防脱链	1
1-18	16264118	WASHER	2	1-44	16264144	COVER	1	1-69	16264169	FUEL TANK	1
1-19	16264119	CLUTCH ASSY	1	1-45	16264145	COVER	1	1-70	16264170	WASHER 5	3
1-20	16264120	CLUTCH	2	1-46	16264146	SCREW ASSY M4X12	1	1-71	16264171	SCREW M5X16	2
1-21	16264121	SPRING,clutch	1	1-47	16264147	COVER,plug	1	1-72	16264172	SCREW M5X20	1
1-22	16264122	WASHER 6X15X1	2	1-48	16264148	PLUG BM6A	1	1-73	16264173	CLEANER	1
1-23	16264123	NUT M8X1	1	1-49	16264149	SCREW M5X20	4	1-74	16264174	PRIMARY CORD GROMMET	1
1-24	16264124	STOP CORD COMP.	1	1-50	16264150	GASKET,muffler	1	1-75	16264175	INLET FUEL PIPE 2.4*4.5*200	1
1-25	16264125	PRIMARY CORD GROMMET	1	1-51	16264151	MUFFLER	1	1-76	16264176	OUTLET FUEL PIPE	1
1-26	16264126	MAGNETO STATOR	1	1-52	16264152	SCREW M5X55	2	1-77	16264177	PLUG CAP	1
1-27	16264127	MAGNETO ROTOR	1	1-53	16264153	CYLINDER	1				

FIG. 2: T264 Brush Cutter Explosive Picture



Ser.NO.	Code	Part Name	Qty	Ser.NO.	Code	Part Name	Qty	Ser.NO.	Code	Part Name	Qty
2-1	16264201	gera case ass'y	1	2-37	16264237	flap washer(Φ6)	4	2-73	16264273	tube	1
2-2	16264202	stop ring(Φ26)	1	2-38	16264238	holder ass'y	1	2-74	16264274	stop button comp	1
2-3	16264203	stop ring(Φ10)	1	2-39	16264239	harness clamp	1	2-75	16264275	hardgrop	1
2-4	16264204	bearing(629-2RS)	2	2-40	16264240	clamp	1	2-76	16264276	spring	1
2-5	16264205	pinion	1	2-41	16264241	screw (M5×20)	1	2-77	16264277	box,left	1
2-6	16264206	screw(M5×25)	1	2-42	16264242	nut (M5)	4	2-78	16264278	screw(M5×14)	1
2-7	16264207	washer	2	2-43	16264243	pipe comp	1	2-79	16264279	nut(M5)	2
2-8	16264208	bolt (M6×12)	2	2-44	16264244	rubber cover	6	2-80	16264280	bracket	1
2-9	16264209	gear case	1	2-45	16264245	oil-bearing(8×14×14)	6	2-81	16264281	screw(M5×20)	2
2-10	16264210	safety guard	1	2-46	16264246	drive shaft 1	1	2-82	16264282	safety guard	1
2-11	16264211	screw (M5×12)	3	2-47	16264247	pipe(26×1.5×778)	1	2-83	16264283	spacer	1
2-12	16264212	bearing(6000/P5)	1	2-48	16264248	harness ass'y	1	2-84	16264284	screw(M5×16)	4
2-13	16264213	gear	1	2-49	16264249	wire clamp band	3	2-85	16264285	screw(ST4.2×16)	1
2-14	16264214	gear shaft	1	2-50	16264250	screw(M6×40)	4	2-86	16264286	blade	1
2-15	16264215	bearing(6202-2RS/P5)	1	2-51	16264251	cap,lower	1	2-87	16264287	screw(ST4.2×12)	2
2-16	16264216	stop ring (Φ32)	1	2-52	16264252	rubber cover	1	2-88	16264288	guard ass'y	1
2-17	16264217	holder A	1	2-53	16264253	nut (M6)	4	2-89	16264289	nylon cutter head	1
2-18	16264218	holder B	1	2-54	16264254	bracket	1	2-90	16264290	case	1
2-19	16264219	washer(Φ10)	1	2-55	16264255	nut(M6)	4	2-91	16264291	left nut A	1
2-20	16264220	left nut(M10×1.25)	1	2-56	16264256	cap,upper	1	2-92	16264291	washer	2
2-21	16264221	pin (2×16)	2	2-57	16264257	screw(M5×55)	4	2-93	16264291	spring	1
2-22	16264222	blade(1.4×255×25.4)	1	2-58	16264258	right handle	1	2-94	16264291	rope	1
2-23	16264223	clutch comp	1	2-59	16264259	left handle	1	2-95	16264291	cord holder	1
2-24	16264224	clutch drum comp	1	2-60	16264260	rubber cover	1	2-96	16264291	cover	1
2-25	16264225	stop ring (Φ35)	1	2-61	16264261	sheath	1	2-97	16264291	pipe (718MM)	1
2-26	16264226	bearing(6202-2RS/P5)	2	2-62	16264262	lever ass'y	1	2-98	16264291	pipe join	1
2-27	16264227	stop ring (Φ15)	1	2-63	16264263	screw(ST2.9×10)	1	2-99	16264291	screw M5x12	1
2-28	16264228	clutch case	1	2-64	16264264	button	1	2-100	162642100	screw M6X35	1
2-29	16264229	rubber cover	1	2-65	16264265	spring	1	2-101	162642101	pin	1
2-30	16264230	screw (M5×25)	2	2-66	16264266	clockpin	1	2-102	162642102	washer	1
2-31	16264231	flexible washer(Φ5)	3	2-67	16264267	handgrip	1	2-103	162642103	Screw	1
2-32	16264232	flap washer(Φ5)	3	2-68	16264268	spring	1	2-104	162642104	drive shaft 2	1
2-33	16264233	clamp B	1	2-69	16264269	box,right	1	2-105	162642105	Join	1
2-34	16264234	clamp A	1	2-70	16264270	screw(ST2.9×18)	2	2-106	162642106	间隔套	2
2-35	16264235	screw(M6×20)	4	2-71	16264271	screw(M5×30)	1	2-107	162642107	blade cover	1
2-36	16264236	flexible washer(Φ6)	4	2-72	16264272	cable comp	1	2-108	162642108	screw M5x12	1