

SPARE PARTS LIST

MODEL NO. EW1060H

ITEM	PART NO.	DESCRIPTION	QTY	NOTE
029	922223-9	H.S.H.BOLT M5X16 WITH WR	4	
030	141768-0	BLOWER HOUSING COMPLETE INC. 31	1	
031	211243-1	BALL BEARING 6002ZZ	1	
032	922442-7	HEX. SOCKET HEAD BOLT M8X25	2	
033	257339-4	RING 17	1	
034	326224-3	SHAFT	1	
035	265577-4	HEX HEAD BOLT M6X16	1	
036	318939-6	FLYWHEEL	1	
037	922138-0	H.S.H.BOLT M4X20 WITH WR	2	
038	168501-5	IGNITION COIL	1	
039	324891-8	PLUG CAP SPRING	1	
040	424105-6	PLUG CAP	1	
041	638665-4	LEAD UNIT	1	
042	424313-9	GROMMET	1	
044	451876-2	PLUG COVER	1	
045	266572-7	+ TRUSS HEAD SCREW M5X8	1	
046	911213-7	PAN HEAD SCREW M5X12	3	
047	451875-4	CYLINDER COVER	1	
048	266440-4	HEX SOCKET HEAD BOLT M5X40	2	
049	265184-3	+TRUSS HEAD SCREW M5X5	1	
050	345915-7	MUFFLER COVER	1	
051	168469-5	EXHAUST MUFFLER	1	
052	345916-5	MUFFLER GASKET	1	
053	324980-9	SPARK ARRESTER	1	
054	922217-4	HEX. SOCKET HEAD BOLT M5X14	4	
055	140419-2	ROCKER COVER COMPLETE	1	
056	162307-3	ROCKER COVER GASKET	1	
057	168401-9	SPARK PLUG	1	
058	135563-8	CYLINDER BLOCK ASSEMBLY INC. 59-62	1	
059	424201-0	CHECK VALVE	2	
060	922222-1	HEX. SOCKET HEAD BOLT M5X16	4	
061	266573-5	HEX. SOCKET HEAD BOLT M5X33	4	
062	424200-2	SPACER	2	
063	162274-2	CAM GEAR COVER GASKET	1	
064	318443-5	CAM GEAR COVER	1	
065	922212-4	HEX. SOCKET HEAD BOLT M5X12	3	
066	450565-6	OIL GAUGE	1	
067	424100-6	GASKET	1	
068	162308-1	CASE GASKET	1	
069	318612-8	OIL CASE	1	
070	922217-4	HEX. SOCKET HEAD BOLT M5X14	4	
071	346083-9	LEAD VALVE	1	
072	318440-1	RETAINER PLATE	1	
073	922112-8	HEX. SOCKET HEAD BOLT M4X10	1	
074	346640-3	PLATE	1	
075	126241-1	SWITCH ASSEMBLY	1	
076	911107-6	PAN HEAD SCREW M4X8	2	
077	325912-9	SPRING RETAINER	2	
078	234181-0	COMPRESSION SPRING 11	2	
079	125554-7	ROCKER ARM ASSEMBLY	2	
080	256866-8	ROD 2.5	2	
081	256200-2	PIN 5	1	
082	325914-5	INTAKE VALVE	1	
083	325913-7	EXHAUST VALVE	1	
084	268239-3	PIN 4	1	
085	313169-4	CAM LIFTER	2	
086	125552-1	CAM GEAR ASSEMBLY	1	
087	268238-5	PIN 5	1	
088	195141-6	PISTON RING SET	1	

SPARE PARTS LIST

MODEL NO. EW1060H

ITEM	PART NO.	DESCRIPTION	QTY	NOTE
089	233983-1	CLIP	2	
090	318613-6	PISTON	1	
091	257796-6	PISTON PIN	1	
092	212085-6	NEEDLE CAGE1014	1	
093	254040-2	WOODRUFF KEY 3	1	
094	213537-0	OIL SEAL 12	1	
095	267425-3	FLAT WASHER 26	1	
096	126559-0	CRANKSHAFT ASSEMBLY	1	
097	213148-1	OIL SEAL 10	1	
098	125472-9	FUEL TANK CAP ASSEMBLY	1	
		INC, 99.100		
099	140435-4	FUEL TANK CAP	1	
100	140436-2	STRAP COMPLETE	1	
101	424104-8	DAMPER	1	
102	424102-2	PLATE	1	
103	424103-0	PLATE	1	
104	451877-0	FUEL TANK	1	
105	345920-4	HOSE CLAMP	1	
106	163447-0	GASOLINE FILTER	1	
107	162309-9	TUBE	1	
108	195142-4	RECOIL STARTER SET	1	
		INC, 109-115		
109	165606-2	PULLEY	1	
110	266580-8	TAPPING SCREW 5X10	1	
111	451923-9	REEL	1	
112	232257-7	SPIRAL SPRING	1	
114	424317-1	STARTER KNOB	1	
115	444018-5	STARTER ROPE	1	
116	911218-7	PAN HEAD SCREW M5X14	1	
118	413120-5	INSULATOR GASKET	1	
119	451874-6	INSULATOR	1	
123	325934-9	ADJUST SCREW	1	
124	346261-1	CARBURETOR INSULATOR	1	
125	922228-9	H.S.H.BOLT M5X18 WITH WR	2	
126	413138-6	CARBURETOR GASKET	1	
127	450562-2	CLAMP	1	
128	922213-2	H.S.H.BOLT M5X12 WITH WR	1	
129	168783-9	CARBURETOR	1	
		INC, 130-135,137-144,146		
130	325922-6	SWIVEL	1	
131	413140-9	WASHER	1	
132	257964-1	STOP RING E-3	1	
133	WJ00096364	SCREW M3X8 WITH WASHER	2	
134	234183-6	CONICAL COMPRESSION SPRING 5-9	1	
135	213538-8	O RING 2	1	
137	442155-9	PUMP GASKET	1	
138	168575-6	PUMP DIAPHRAGM	1	
139	266582-4	TAPPING SCREW 3X24	4	
140	346270-0	PRIMER PUMP COVER	1	
141	424314-7	PRIMER PUMP	1	
142	140438-8	AIR PURGE BODY	1	
143	168574-8	METERING DIAPHRAGM	1	
144	442154-1	METERING DIAPHRAGM GASKET	1	
146	352010-6	INLET SCREEN	1	
147	345918-1	HOSE CLAMP	1	
148	422055-9	BREATHER PIPE	1	
149	422042-8	PIPE	1	
150	125468-0	CLEANER PLATE ASSEMBLY	1	
		INC, 151-158		
151	451925-5	CHOKE LEVER	1	
152	213540-1	O RING 15	1	

SPARE PARTS LIST

MODEL NO. EW1060H

ITEM	PART NO.	DESCRIPTION	QTY	NOTE
153	424316-3	CHECK VALVE	1	
154	213539-6	O RING 14	1	
155	451924-7	CHECK VALVE PLATE	1	
156	424315-5	CHECK VALVE	1	
157	168577-2	SEPARATOR GASKET	1	
158	168576-4	SEPARATOR PLATE	1	
159	450560-6	CHOKE PLATE	1	
160	423376-2	GASKET	1	
161	345919-9	PLATE	1	
162	265188-5	+PAN HEAD SCREW M5X68	2	
163	443141-3	AIR CLEANER ELEMENT	1	
164	450561-4	AIR CLEANER COVER	1	
165	911218-7	PAN HEAD SCREW M5X14	4	
167	325915-3	INTAKE PIPE	1	
168	213078-6	O-RING 10	1	
169	816446-8	GAS EMISSION APPROVAL LABEL	1	
170	819430-2	CAUTION TAG	1	
171	897795-2	SERIAL NO. LABEL	1	
172	ME08121070	REFUELING HANDLE GROUP	1	
173	ME08122002	BASE	1	
174	ME08122003	RUBBER FEET	4	
175	ME08122004	HEXAGON BOLT	4	
176	ME08122005	WAD	4	
177	ME08122006	GASKET	4	
178	ME08122007	HEXAGON NUT	4	
179	ME08122008	HEXAGON BOLT	2	
180	ME00200117	WAD	2	
181	ME08122040	GASKET	2	
182	ME08122010	PUMP FRAME	1	
183	ME08122011	HEXAGON SOCKET SCREW	4	
184	ME08122012	WAD	4	
185	ME08122013	GASKET	4	
186	ME08122014	O-RING	4	
187	ME08122015	MECHANICAL OIL SEAL	1	
188	ME08122016	IMPELLER	1	
189	ME08122017	VOLUTE	1	
190	ME08122018	O-RING	1	
191	ME01676320	O-RING	1	
192	ME08122019	PUMP CASING	1	
193	ME08121006	HANDLE	1	
194	ME00200116	HEXAGON BOLT	2	
195	ME08122020	HEXAGON BOLT	2	
196	ME00200117	WAD	4	
197	ME01676323	HEXAGON NUT	4	
198	ME00200091	FLAT GASKET	4	
199	ME08121007	VALVE	1	
200	ME08121008	TUBE JOINT BOLT	1	
201	ME00200011	HEXAGON BOLT	3	
202	ME01676327	TUBE JOINT CORE	2	
203	ME08121009	LOCKNUT	2	
204	ME08121044	SEAL RING	2	
205	ME01689268	STRAINER GROUP	1	
206	ME01676330	HOOP	3	
207	ME01676331	WATER BLOCK	1	
208	ME01676329	O-RING	1	
209	ME08122021	WATER BLOCK	1	
210	ME08122018	O-RING	1	
211	ME08122050	GASKET	99	
212	ME08122051	GASKET	99	
213	ME08122055	REFUELING WINDING	1	
214	ME01676336	SUCTION PIPE	1	

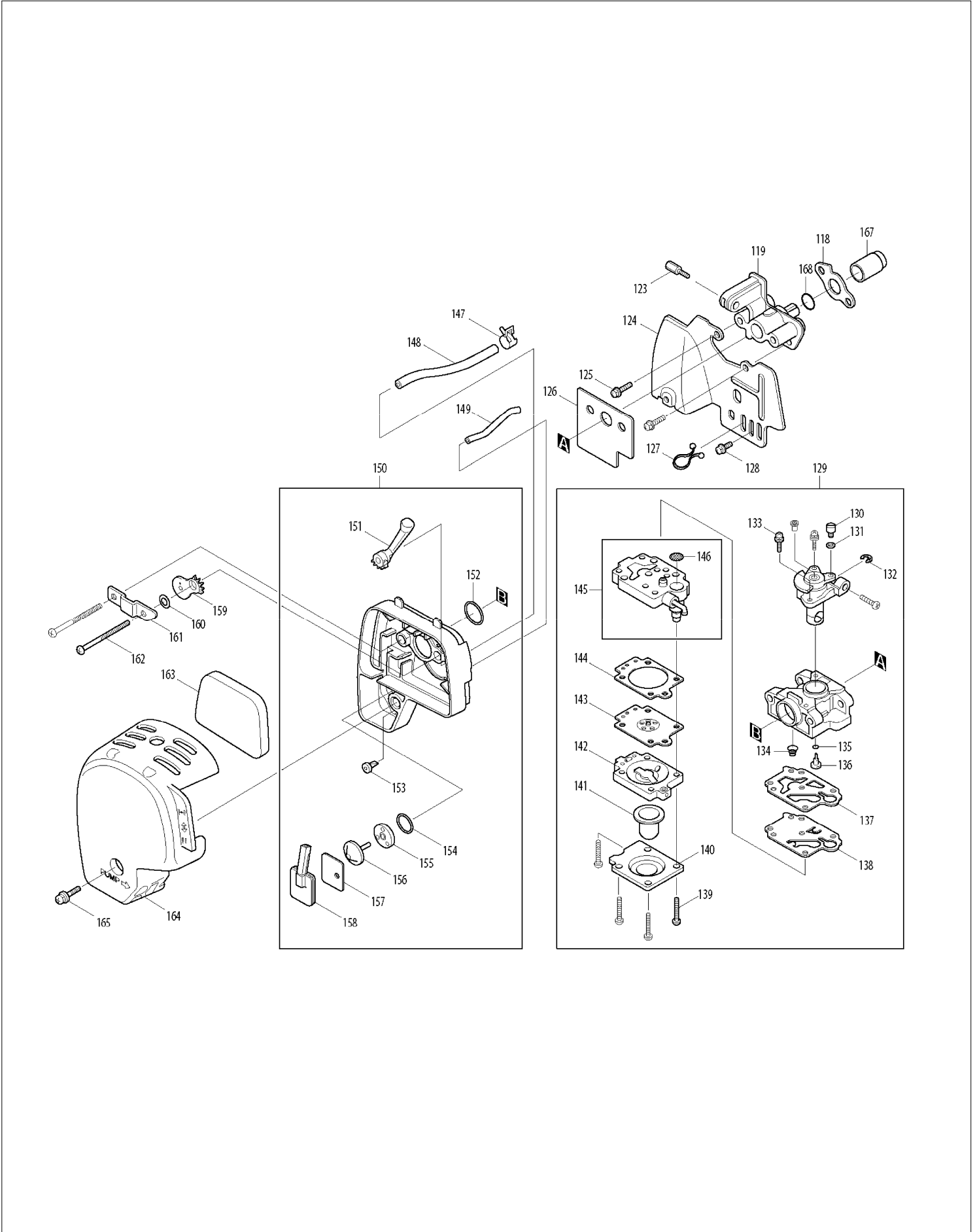
SPARE PARTS LIST

MODEL NO. EW1060H

ITEM	PART NO.	DESCRIPTION	QTY	NOTE
215	ME08121013	NOTE LABEL	1	
216	ME08121014	NOTE LABEL	1	
217	ME08121030	NOTE LABEL	1	
218	ME08121035	NOTE LABEL	1	
219	ME03333192	NOTE LABEL	1	
A01	ME08121017	SOCKET WRENCH	1	
A02	ME08121040	RAPID JOINT GROUP INC. A03,A04	1	
A03	ME08121044	SEAL RING	1	
A04	ME08121045	SEAL RING	1	
A05	ME08121051	JOINT CORE INC. A06,A07	1	
A06	ME08121052	CONNECTOR NUT	1	
A07	ME08121044	SEAL RING	1	
A08	ME08121053	HOOP	1	
A09	ME08122060	THE PIPE GROUP INC. A10,A11	1	
A10	ME08121044	SEAL RING	1	
A11	ME08122068	O-RING	1	
A12	ME08122030	GUN GROUP INC. A13-A15	1	
A13	ME08122032	GUN GLOVES	1	
A14	ME08122034	ROUND HEAD SCREW	1	
A15	ME08122035	O-RING	1	
A16	ME08121060	CROSS OVER SUB	1	
A17	ME08121044	SEAL RING	1	
A18	ME08121080	OILER	1	

SERVICE DRAWING

MODEL NO. EW1060H



SERVICE DRAWING

MODEL NO. EW1060H

